



## Academy Membership Levels

### ACADEMY 1 - PROFICIENT

Entry level for practitioners joining the NIS Academy  
Academy 1 members are current with NIS research, and familiar with treatment procedures.

All Academy 1 members have passed an NIS Proficiency Assessment - evaluating their competency with NIS and their foundational understanding of anatomy and physiology from an NIS perspective.

Pre-requisites to sit Proficiency: Practitioners must have completed a minimum of 2x Module A & 2x Module B\* seminars in the last 4 yrs. \*NIS seminar attendees for 2006 - 2008 only need to complete 1x Module A & 1x Module B seminar.

### ACADEMY 2 - CERTIFIED

Endorsed by NeuroLink

Academy 2 members have a very high level of understanding of the neuro-anatomy and physiology behind the NIS system. All Academy 2 members have been assessed on their ability to assess neurologically integrated body function from an NIS perspective.

Academy 2 members have passed the NIS Certification Exam evaluating their PRACTICAL, CLINICAL and THEORETICAL understanding of NIS. Academy 2 members are endorsed by NeuroLink - therefore the standard required to pass certification is very high.

Pre-requisites to sit Certification: Practitioners need to first be in Academy 1, and have a minimum of 3 years working with NIS in a clinical setting.

### ACADEMY 3 - TRAINER

Qualified to teach NIS

Academy 3 members teach NIS seminars on behalf of NeuroLink, and offer on-going support to practitioners integrating NIS into practice.

## Assessment Dates 2010

### NIS Proficiency

Module A	Mar 20-21	Sydney, NSW
Module A	May 15-16	Melbourne, VIC
Module A	June 5-6	Los Angeles, CA
Module A	June 12-13	London,
Module A	June 26-27	Auckland
Module B	Aug 7-8	Sydney, NSW
Module B	Aug 21-22	Auckland, NZ
Module B	Sept 11-12	Chicago, IL
Module B	Sept 18-19	London, UK

### NIS Certification

NIS Masters	Oct 15-16	TBA
-------------	-----------	-----

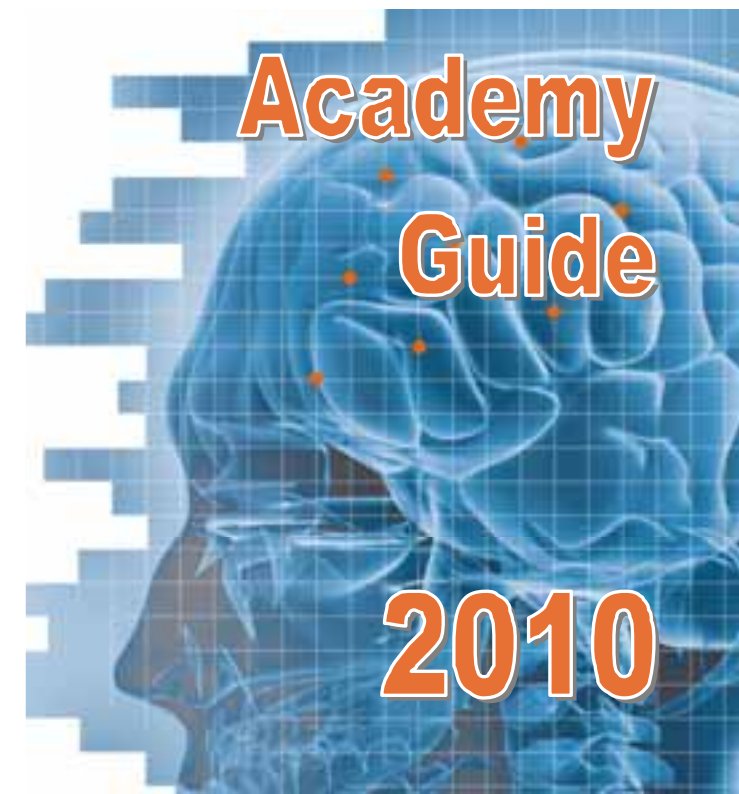
Assessment Fee		USA/ UK \$USD	Australia \$AUD	NZ \$NZD
Includes first year subscription				
Certification	Full Exam sit	\$750	\$750	n/a
	Re-sit Written Re-sit Practical	\$200 \$550	\$200 \$550	n/a n/a
Proficiency	Full Exam sit	\$195	\$195	\$240

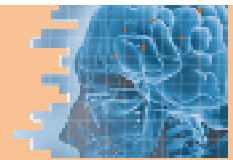
Annual Subscription		USA/ UK \$USD	Australia \$AUD	NZ \$NZD
Academy 3	Trainer	FREE	FREE	FREE
Academy 2	Certified	\$110	\$110	\$140
Academy 1	Proficient	\$120	\$120	\$150

## Contact Us

For more information please contact the NeuroLink NIS Seminars team in Auckland, New Zealand.

New Zealand	<b>Ph:</b>	+649 522 2277 ext 206
USA/ Canada	<b>Ph:</b>	1-888 745 8014 (toll free)
Australia	<b>Ph:</b>	1-800 126 748 (toll free)
United Kingdom	<b>Ph:</b>	0800 917 0191 (toll free)
	<b>Post:</b>	P.O. Box 74176, Market Rd, Auckland 1543, New Zealand
	<b>Fax:</b>	+649 522 2278
	<b>Email:</b>	training@neurolinkglobal.com
	<b>Web:</b>	www.neurolinkglobal.com





The Neurological Integration System (NIS) is an innovative, stand alone approach to healthcare management.

All NIS research is based on proven principles of neuroscience and physiology.

Developed by Neurolink®, NIS is taught through the NIS Seminar Program.

The NIS Academy is a global body of practitioners committed to offering specialist healthcare to patients, utilising the Neurological Integration System (NIS), developed by Neurolink & taught globally through the NIS Seminar Program.

## Role of the NIS Academy

Assist practitioners in their quest to offer the best healthcare possible to their patients, by providing the tools and support necessary for practitioners to successfully integrate NIS into their practice with confidence. With a strong long-term partnership between Neurolink and Academy members, patients will benefit from access to this powerful stand alone healthcare system.

## How will this be achieved?

- By offering on-going professional development, NIS Academy members will have access to latest research updates from Dr Phillips and his team. These updates will be available in a number of formats, including on-line training events. Members will receive updates that they can implement straight away into practice – without needing to wait until the next seminar.
- By working alongside practitioners to develop strategies to build public awareness of NIS.
- Encouraging and promoting professional ethical standards in the practice of NIS.

## Why join the NIS Academy?

Academy Members are promoted by Neurolink as the most up-to-date NIS practitioners. They are included in Neurolink's on-line practitioner directory, making them the first stop for any patient searching for a local practitioner using NIS.

Each membership level has its own benefits (these are listed on the adjacent page) but all members will soon also have

- access to on-line training/ review sessions with Dr Phillips and other NIS trainers
- personalised NIS business cards with the NIS Academy logo to introduce NIS to patients
- marketing material to help members build patient awareness & understanding of NIS

## Practitioner Directory

Academy members are included in the NIS Practitioner Directory on the Neurolink website. The Neurolink website is aimed at marketing NIS to ALL patients for ALL NIS practitioners.

The site will introduce YOU as an Academy Member, and it will explain why as an ACTIVE member you should be their first 'port-of-call' when looking to locate a local practitioner using NIS.

## Who can join?

All practitioners who have learnt the NIS system, and have started working with NIS in practice on a regular basis should consider joining the NIS Academy.

## Academy Certificate

Neurolink will issue an Academy Certificate to all ACTIVE members on an annual basis. It is important to let patients know that you are 'up-to-date' with NIS research and committed to managing their health.

For more information on the NIS Academy see the complete Guide on the Neurolink website:  
[www.neurolinkglobal.com](http://www.neurolinkglobal.com).

### STEP 1: LEARN THE NIS SYSTEM

Complete the Module A & B Combo



### STEP 2: REFRESH THE NIS SYSTEM

Module A & Module B



### STEP 3: JOIN THE NIS ACADEMY

Once you have completed 2x Module A & 2x Module B seminars, you can register to sit NIS Proficiency to become an Academy 1 Member

## ACADEMY MEMBERSHIP BENEFITS...

### Academy 1

- Access to Masters—presented by Dr Phillips
- Discounted prices to NIS seminars
- Access to Neurolink's website Academy section
- Inclusion in the on-line NIS Practitioner Directory
- Annual Academy Certificate
- Use of the NIS Academy Member logo

### Academy 2

All of the above plus...

- Endorsement by Neurolink
- Option to apply for a facilitator position at Module A&B seminars
- FREE advertising in the classified section on the Neurolink website

### Academy 3

All of the above plus...

- Access to research updates first and personal training with Dr Phillips
- Included in the NIS Practitioner Directory – at the top of the listing
- FREE Academy Membership