

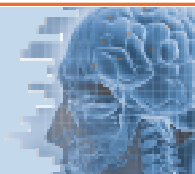


# Neurological Integration System

## Practitioner Seminar Guide

2012





## *What is NIS*

The Neurological Integration System is a cutting-edge approach to healthcare transforming practices around the globe.

NIS provides healthcare professionals with tools to treat a wide range of complaints with superior results.

### **What is NIS?**

The NIS system is an effortless but effective healthcare system that will give you the tools to address neurological, pathological, physical, hormonal, emotional, and structural issues for your patients.

Specialising in acute pain and chronic illness the NIS system accesses the latest scientific research at cellular level to address CAUSES NOT SYMPTOMS.

Only by addressing health at cell level can optimum health be achieved.

Using the NIS system you will have a new approach that will allow you to widen the scope of what you currently treat in practice, with an ability to treat even more complex complaints.

### **Who can learn NIS?**

All our seminars are designed to be post-graduate. NIS Seminars are predominantly attended by (but not limited to) participants from the following professions: M.D, D.C., D.O., R.N., N.D., and D.V.M.

Pre-requisites to attend are as follows:

1. **QUALIFICATIONS:** MINIMUM of a Bachelors Degree in one of the health/clinical sciences &/ or Bachelors Degree Psychology.
2. **LICENSE:** Must be licensed for independent practice by a national or state registration. Psychologists will need to supply their registration number.

Participants may be asked for additional proof of their qualifications and license at time of registration.

**NIS provides healthcare professionals with tools to treat a wide range of complaints with superior results.**

### **Why learn NIS? Interactive Info Kit**

Find out...

- What is the NIS system?
- How does it work?
- What will the NIS system do for my practice?
- Case Studies

Download from the NIS Seminar section on our website.

[www.neurolinkglobal.com](http://www.neurolinkglobal.com)

Or we can post you a CD, email us at [training@neurolinkglobal.com](mailto:training@neurolinkglobal.com)

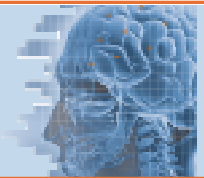
### **Introductory Workshops**

Find out how NIS can transform your practice!

We will demonstrate an NIS treatment and teach you some protocols to take away and start using **STRAIGHT AWAY** in practice.

See our website or registration form for details.

[www.neurolinkglobal.com](http://www.neurolinkglobal.com)



## Who is using NIS?

The NIS system has been taught now for over 25 years internationally and is used in clinics and practices by practitioners globally.

- |                       |                          |
|-----------------------|--------------------------|
| ✓ Acupuncture T.C.M.  | ✓ Osteopath D.O.         |
| ✓ Chiropractor D.C.   | ✓ Physio Therapists P.T. |
| ✓ Dentist D.M.D.      | ✓ Registered Nurse R.N.  |
| ✓ Medical Doctor G.P. | ✓ Veterinarians D.V.M.   |
| ✓ Naturopath N.D.     | ✓ Plus many more         |

### What practitioners are saying

*"Over the years I have done many many seminars like most chiropractors and I found NIS to be very interesting, very well taught and most importantly very easy to implement back to practice."*

**Dr Nick Wood, Chiropractor, Australia**

*"After being in practice for many years, and having a long history of chronic health problems myself, I thought I'd seen it all when it comes to treating difficult and chronic health conditions.*

*NIS has proven me wrong indeed, and given me hope that not only can I do so much more for my patients, but I can also look forward to a more positive future for my own health as well."*

**Dr Cheryl Weymouth, Chiropractor, Australia**

*"Since being introduced to Neurolink's Neurological Integration System (NIS) in 2005, I am constantly impressed with the results that patients achieve.*

*Even after returning home from the very first Part 1 seminar, on the Sunday evening I went to visit an elderly relative who'd suffered a stroke on the Friday. He had the whole right side of his face dropped with weakness & dribbling. I treated only his cortical integration & within 30 minutes we all watched while his face returned to normal!"*

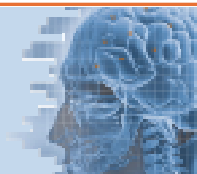
**Dr. A Hubbard, Osteopath. Australia**

### What can NIS help with?

- Allergies
- Asthma
- Back & neck pain
- Children
- Chronic fatigue
- Circulation
- Depression
- Digestion
- Learning / Behavioural difficulties
- Migraine / Headaches
- Neurological Injury
- Skin problems
- Sleep disorders
- Sports
- Viruses/ immunity

Disclaimer It is important to note that NIS does not cure or heal, but accesses the intelligence of the brain to facilitate the re-setting of neurological pathways, to achieve optimum potential.





## Seminar Outline

### The NIS system

Learning the complete NIS system takes TWO weekends (4 days). Module A & Module B.

Each weekend is 14 hours of theory and practical.

The NIS system is designed to 'map on' to your current techniques, and is the perfect complement to add to your practice tool kit this year!

#### Module A & B Combo

First time? Select 1 Module A & B to attend in 2012.

#### Weekend 1: Module A 10 Steps

Learn the 10 core NIS components that you will want to use **EVERY DAY** with **EVERY PATIENT**.

These pathological, structural, neurological & glandular based tools will help you to assess and correct causal dysfunction for a wide range of complaints.

Not only will you learn the art of muscle testing and the neurophysiology behind the NIS system – you will learn **10 steps to take into practice & use straight away!**

#### Weekend 2: Module B Advanced

**Take NIS to the next level!**

This course is about '**building on**', learning new protocols and extensions of some taught at Module A. You will take away tools that will help you assess and address deeper, more specific issues preventing improvement to many chronic and complex complaints. We will also look more specifically at toxins, hormones and emotions.

Our dedicated workshop component will give you confidence to add these protocols into your practice immediately improving results with your patients right away. NIS Module A is the pre-requisite to attend this seminar.

### Introductory Workshops

Find out how NIS can transform your practice. Join us for an Introductory Workshop.

We will demonstrate an NIS treatment and teach you some protocols to take away and start using **STRAIGHT AWAY** in practice.

See our website or registration form for details.

[www.neurolinkglobal.com](http://www.neurolinkglobal.com)

Australian Chiropractors: NIS is approved for CPD points with the CAA.

Find out if your association is approved, contact us today.

### 2012 Schedule

#### Introductory Workshop

See our website for your local schedule

#### NIS System (A&B Combo)

#### Module A 10 Steps

May 19-20	Sydney, NSW	Australia
June 2-3	Chicago, IL	USA
June 23-24	Auckland	New Zealand

#### Module B Advanced

Aug 11-12	Melbourne	Australia
Sept 22-23	Los Angeles, CA	USA

**REGISTER** [www.neurolinkglobal.com](http://www.neurolinkglobal.com)

### Earlybird Prices

		NZ \$NZD	Australia \$AUD	USA \$USD
New Students	COMBO Module A&B	\$948*	\$819*	\$868*
New Regular		\$1895*	\$1638*	\$1735*
Refresher	Module A	\$790*	\$685*	\$715*
	Module B	n/a	\$785*	\$785*
Academy	Module A	\$695*	\$585*	\$612*
	Module B	n/a	\$680*	\$710*

\*EARLYBIRD: registration received NO LATER than 30 days prior to seminar or REGULAR price (additional 10%) applies.  
Registration includes lunch!  
Students: A discount is available. Contact us for details.

### Contact us

For more information please contact the NeuroLink Seminars team in Auckland, New Zealand.

New Zealand	<b>P:</b>	09 522 2277 ext 206
USA/ Canada	<b>P:</b>	1-888 745 8014 (toll free)
Australia	<b>P:</b>	1-800 126 748 (toll free)
Worldwide	<b>P:</b>	+649 522 2277 ext 206
	<b>E:</b>	<a href="mailto:training@neurolinkglobal.com">training@neurolinkglobal.com</a>
	<b>W:</b>	<a href="http://www.neurolinkglobal.com">www.neurolinkglobal.com</a>

